

VS2020/2040 High-Precision Structure Light 3D Camera



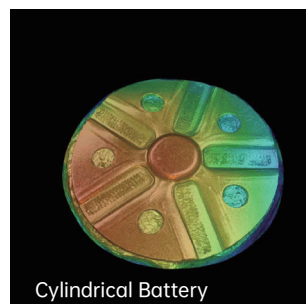
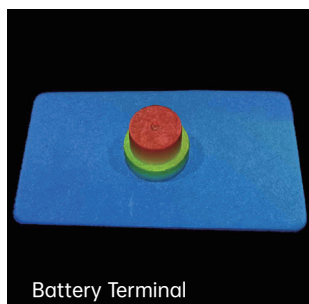
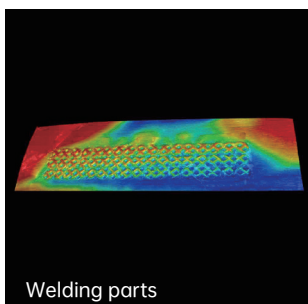
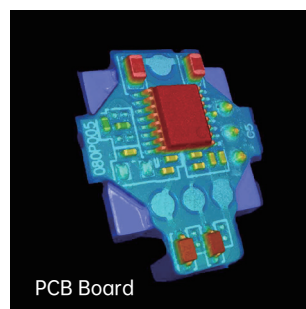
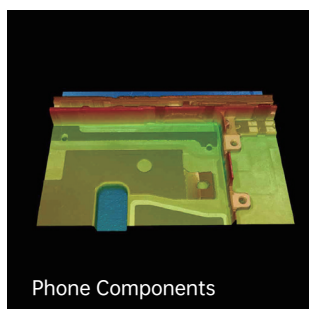
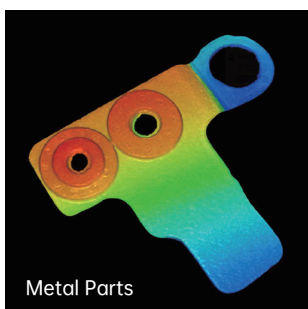
Product Features

VS2020/VS2040 High-Performance Structure Light 3D Camera is engineered for precision-critical applications including dimensional measurement, surface inspection, and 3D positioning guidance. The dual-projection optical architecture with orthogonal fringe encoding technology eliminates projection blind zones, significantly enhancing reconstruction stability and data integrity. The proprietary algorithm compensates for both imaging and projection lens distortion error, achieving micron-level measurement accuracy and submicron-level repeatability.

Product Advantages

- Integrates a high-performance FPGA chip for 3D reconstruction and preprocessing, eliminating dependency on external computing resources.
- A proprietary projection optical design mitigates the impact of micromirror gap, enhancing projection uniformity and measurement consistency.
- Equipped with single-frame HDR and multi-frame exposure fusion capabilities, the system achieves superior dynamic range adaptation for complex lighting environments.
- The SDK adheres to the GenICam interface specification, providing robust secondary development support for seamless hardware-software integration.
- Auto-adaptive parameter tuning enables precise configuration generation without requiring specialized algorithm expertise.

Application



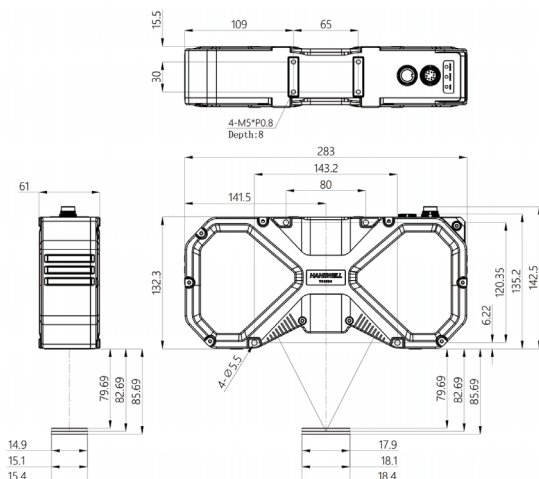
Specifications

| Model | | VS2020 | VS2040 |
|--------------------------------------|---------------------------|---|------------------|
| Image Sensor | | Mono CMOS | |
| Pixel Resolution | | 3072x2560 pixels | 4096x3072 pixels |
| Exposure time | | 50 μ s to 200 ms | |
| Frame Rate (Full / Binning) | | 4 FPS/8 FPS | 3 FPS/6 FPS |
| XY FOV | Near | 17.8 x 14.8 mm | 46.4 x 34.8 mm |
| | Reference Distance | 18.0 x 15.0 mm | 48.0 x 36.0 mm |
| | Far | 18.4x 15.4 mm | 49.6x 37.2 mm |
| Z Range (from reference distance) | | ± 2.5 mm | ± 5 mm |
| Reference distance | | 82 mm | |
| Repeatability(σ) | | 0.2 μ m*1 | 0.5 μ m*1 |
| XY data interval | | 5.9 μ m | 11.7 μ m |
| Light source | | Dual projection unit with high brightness blue LEDs | |
| Interface | | PC and Ethernet card supporting 2500/1000BASE-T*2 | |
| Image transfer protocol | | GigE Vision | |
| Ratings | Supply Voltage | 24 VDC \pm 10% | |
| | Current consumption | 2A | |
| Vibration resistance | Ingress protection rating | IP67 | |
| | Operating temperature | 0°C to 40°C | |
| | Operating humidity | 35% to 85% RH (no condensation) | |
| | Vibration damping | 10 to 57 HZ : 0.75mm P-P, in X, Y, Z directions, 2 hours respectively | |
| | Impact resistance | 15 G/6 msec | |
| Dimensions | | 283 x132 x 61 mm | |
| Weight | | About 3.1 kg | |

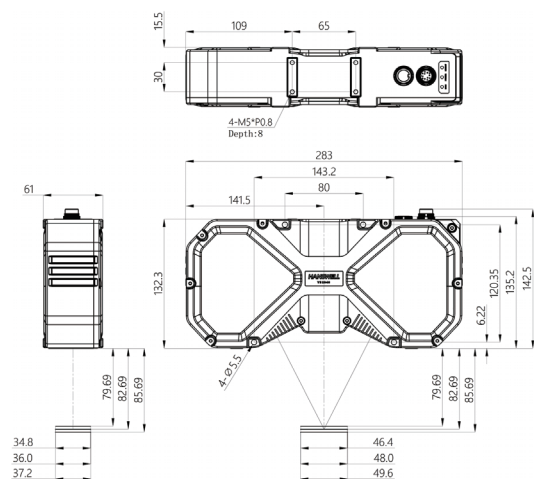
1. Value for HANSWELL standard plane workpieces when a 3 x 3 average filter is used once.
 2. * 2500BASE-T/1000BASE-T compatible PC and network card (NIC) are required. intel®Gigabit Server Adapter or its equivalent is recommended
- * Connections to LANs and connections through a switch or router are not covered under warranty.

Dimensions

(VS2020)



(VS2040)



(Unit: mm)

HANSWELL

Shenzhen Hanswell Technology Co., Ltd.

Tel: 189 2287 6836 / 0755-86028927 Email: marketing@hhwytech.com Web: www.hhwytech.com

Add: * 17th Floor, Block A, Building 6, International Innovation Valley, Dashi 1st Road, Nanshan District, Shenzhen (Head Office)

* Room 428, Block A, 56 Cultural and Creative Park, 80 Tongyuan Road, Suzhou Industrial Park (Branch Office)



Swipe to follow us